



Canal de Rosport (LUX) Sealing systems for hydraulic engineering

Country	Luxembourg
Type	Canal/ hydraulic construction/ rehabilitation
Client	Pont & Chaussees DOA
Main Contractor	Tralux sarl.
Execution of the work	Renesco a.s.
Construction Period	2011

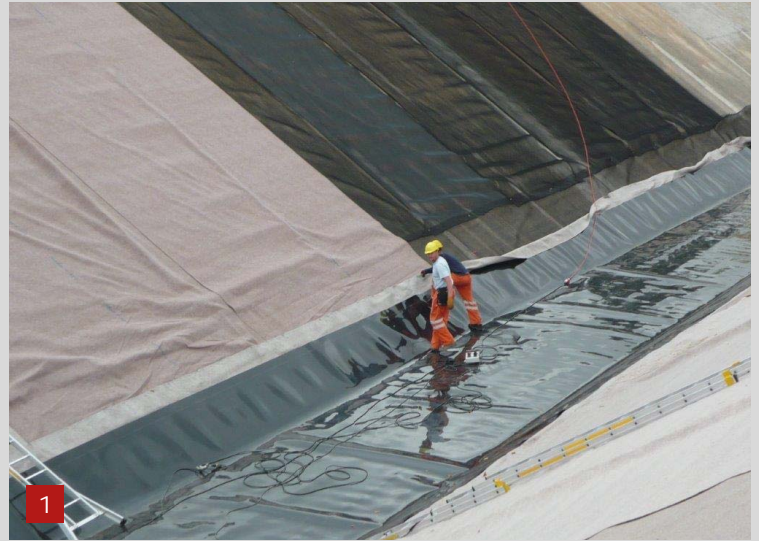
Project Description

Rehabilitation of an existing old concrete canal with a sheet waterproofing membrane system, without repairing the existing old concrete structure.

- Length of the canal: 498m
- Height of the canal: 8m
- Trapezoidal shape of the canal
- Max. water level: 5.30m
- Flow rate of 1m/s

Scope of Service

Installation of a sealing system for the hydraulic structure, high density polyethylene (HDPE) sheets of 2.5mm thickness, polypropylene (PP) based protection geotextile of 500g/m² and polyethylene (PE) sheet protection, plus drainage layer, mechanical clamping with stainless steel fixation.



1. Installation of the HDPE sheet membrane system
2. Floated canal
3. Hydroelectric power station/ intake structure