



YUL Montréal-Trudeau International Airport REM Station (CAN) Sheet Waterproofing

Country	Canada, Québec, Greater Montréal area
Type	Transit, Railway, Metro
Client	ADM Aéroports de Montréal
Main Contractor	Connect Cité (Aecon Group, EBC)
Execution of the work	Renesco Inc.
Designer	Aldea, Jodoin Lamarre Pratte architectes
Construction Period	2022–2024

Project Description

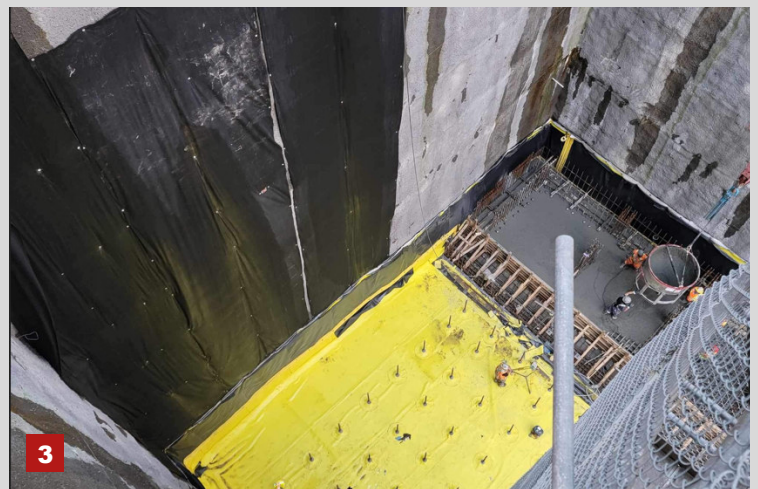
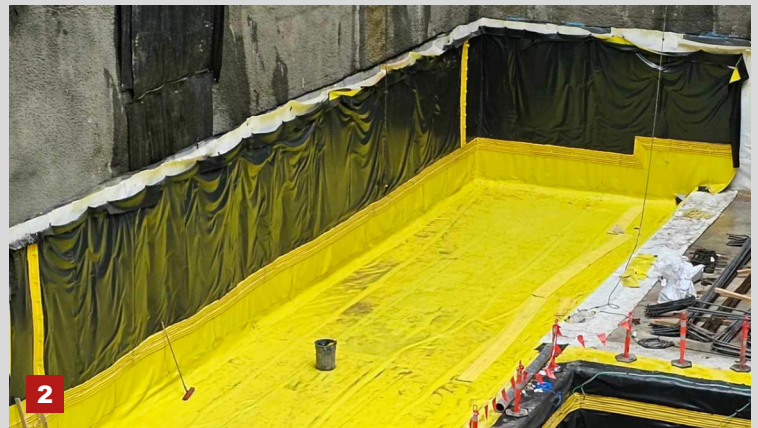
Challenging Urban Tunnel Construction involving the construction of a new underground station as well as the railway line, various shafts, and galleries. The new station and rail connection will link to the 67-kilometre long Réseau express métropolitain (REM), a new automated light rail transit network currently under construction in the Greater Montréal area. It will include also 26 stations.

The TBM will dig a 3km tunnel between the Technoparc and Montréal-Trudeau airport. The REM's route will be underground in this area to protect the wetlands of the Technoparc and pass under the airport runways, more than 30 meters below the surface.

Scope of Service

Supply & install of the Sheet Waterproofing Membrane System under pressurized water for the basements, shafts, adits, tunnels and caverns.

- Protection geotextile, 700g/sqm, PP
- PVC-P, 3mm with signal layer
- PVC-P protection sheet, 1,5mm
- PVC-P water barriers, 400/6/30
- Drainage layer/ board/ geonet
- Tensioning piles/ anchors
- Remedial Grout Pipe Assembly
- Remedial injection system
- Injection hoses
- BA/RA anchors
- Grounding rods (earthing)
- Well pots/ Barbacane (for drainage pits)
- Termination / connection with existing structures



1. Shaft & Cavern
2. Sheet waterproofing/ invert/ basement
3. Sheet waterproofing/ invert/ basement/ tensioning anchors